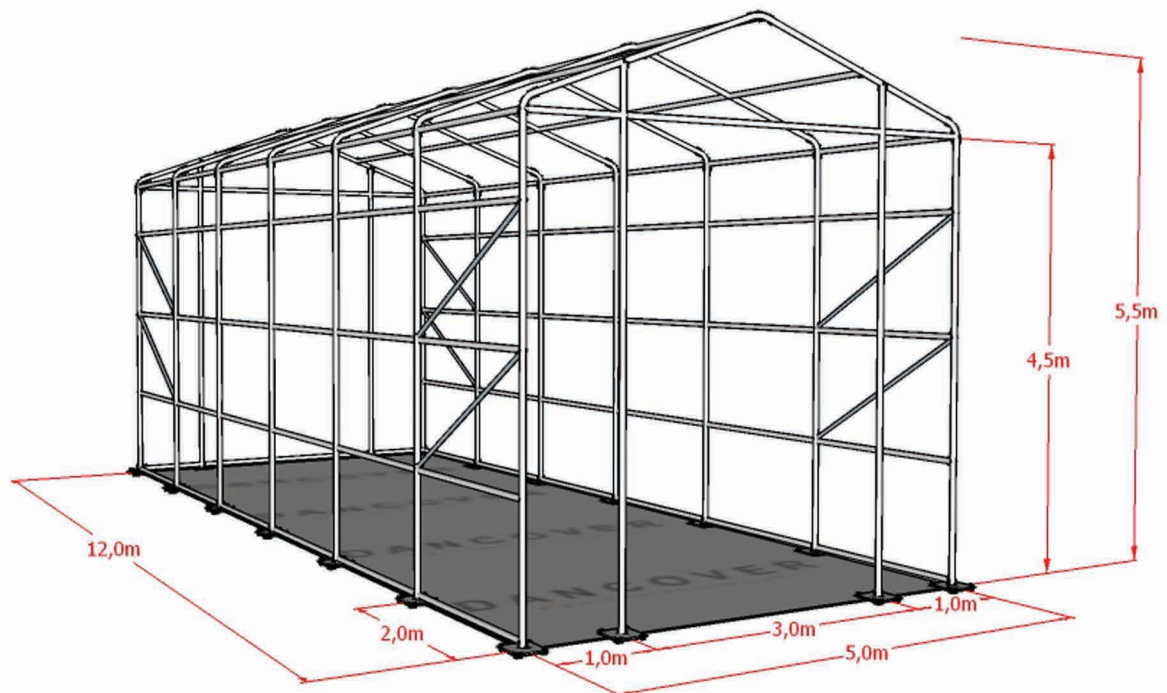


DANCOVER™

Big or Small we cover it all...

Titanium 5m x 12m x 4,5m x 5,5m



Assembly Manual

Table of content.

1. FrontPage.
2. Table of content.
3. List of parts.
4. Construction.
7. Mounting the covers.
9. Contact Information.

Part List For 5m x12m x 4,5m x 5,5m

Part no.	Description	Quantity (pcs.)
1	Curved Roof Tube at two ends (top)	2
2	Curved Roof Tube in the middle (top)	5
3	Curved Roof Tube at two ends (side)	4
4	Curved Roof Tube in the middle (top)	10
5	Sidewall with base plate (in the middle)	10
6	Sidewall with base plate (at two ends)	4
7	Upper sidewall at two ends	4
8	Upper sidewall in the middle	10
9	Lower Standing Legs with Base Plate (in front and back panel)	4
10	Standing legs in front and back panel (in the middle)	4
11	Standing legs in front and back panel (at two ends)	4
12	Roof Purlin and Horizontal Wall at both sides	90
13	Cross tube (in the middle) in front and back panel	8
14	Cross Tube (at two ends) in front and back panel	12
15	Slant supporting tube	8
16	Roof Cover	1
17	Front Cover	1
18	Back Cover	1
19	Stake Peg	36
20	Rope for Fixing Cover	
21	Bolts M14x30	236
	M14x70	50
	M12x50	15
	M14x50	8
22	Inner joint for Cross Tubes and Slant Supporting Tubes	8

Assembly.

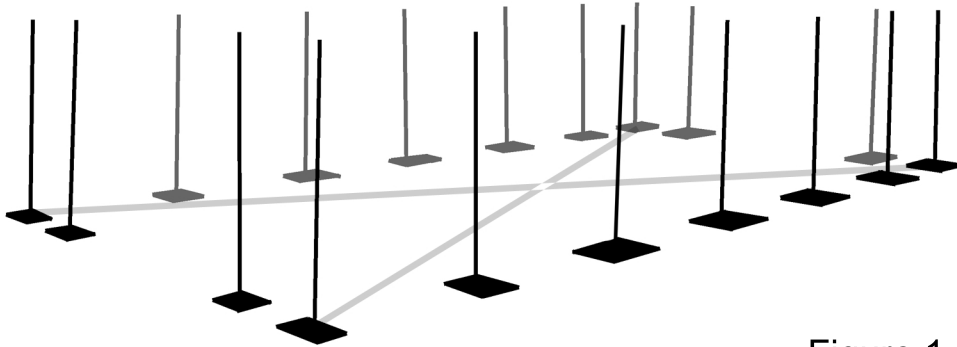


Figure 1

Step #1:

Place base plates as shown in figure #1. Make sure that diagonals are equal in length. Secure base plates with stake pegs. Make sure to use at least 2 stake pegs per base plate and drive them into the ground so they cross each other as shown in figure #3.

Step #2:

Assemble two sidewalls and connect them as shown in figure #2. Make sure that all bolts are secured tightly and placed from the outside and in, to avoid damage on the cover. Figure 3 and 4 shows how joints should be assembled, both shown from inside.

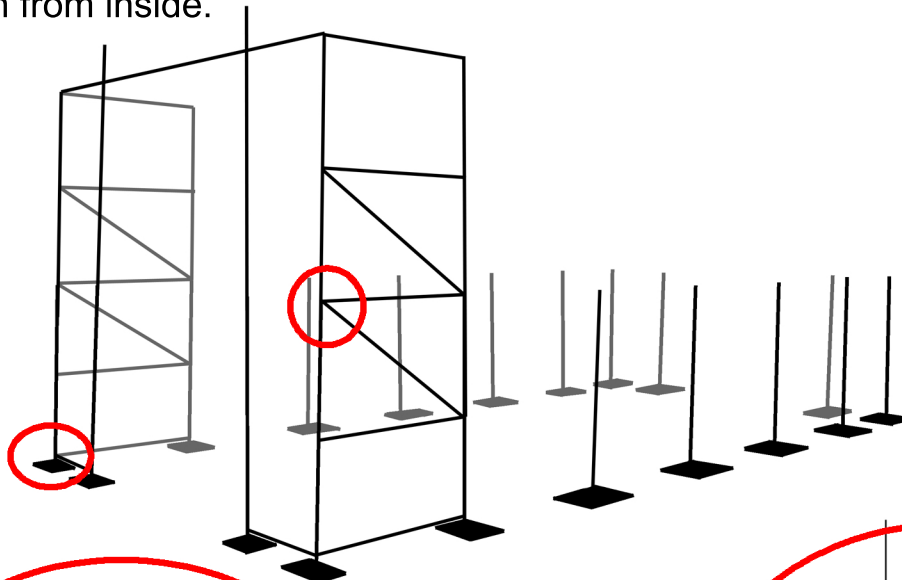


Figure 2

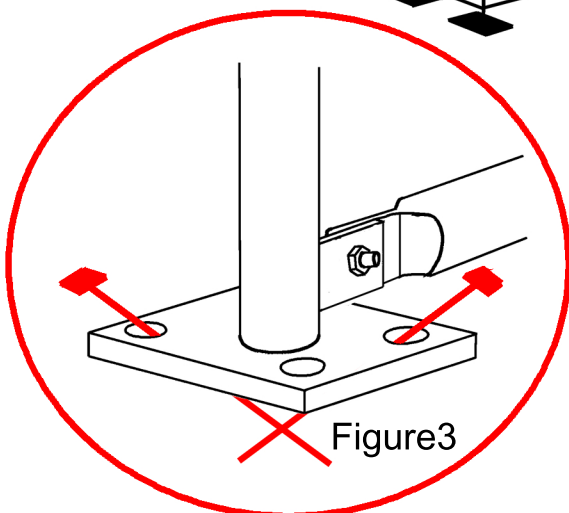


Figure 3

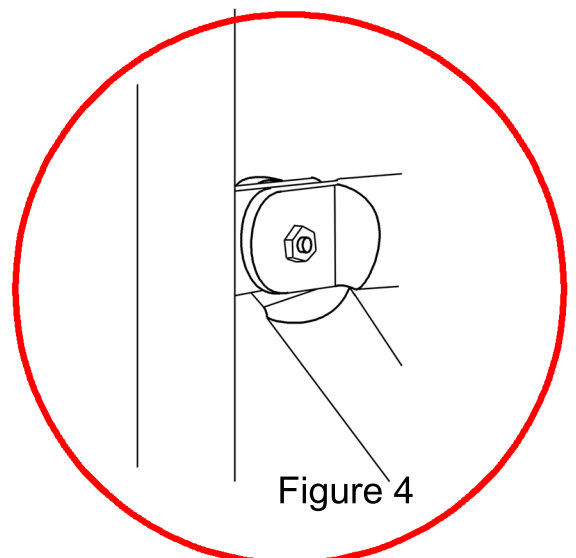


Figure 4

Step #3:

Connect the two sidewalls with the curved roof tubes. Then connect these with the horizontal bars as shown in figure # 5. Figure #6 and #7 show how joints are supposed to be assembled.

Step #4:

Assemble the next two sidewalls in extension of the already erected sides as shown

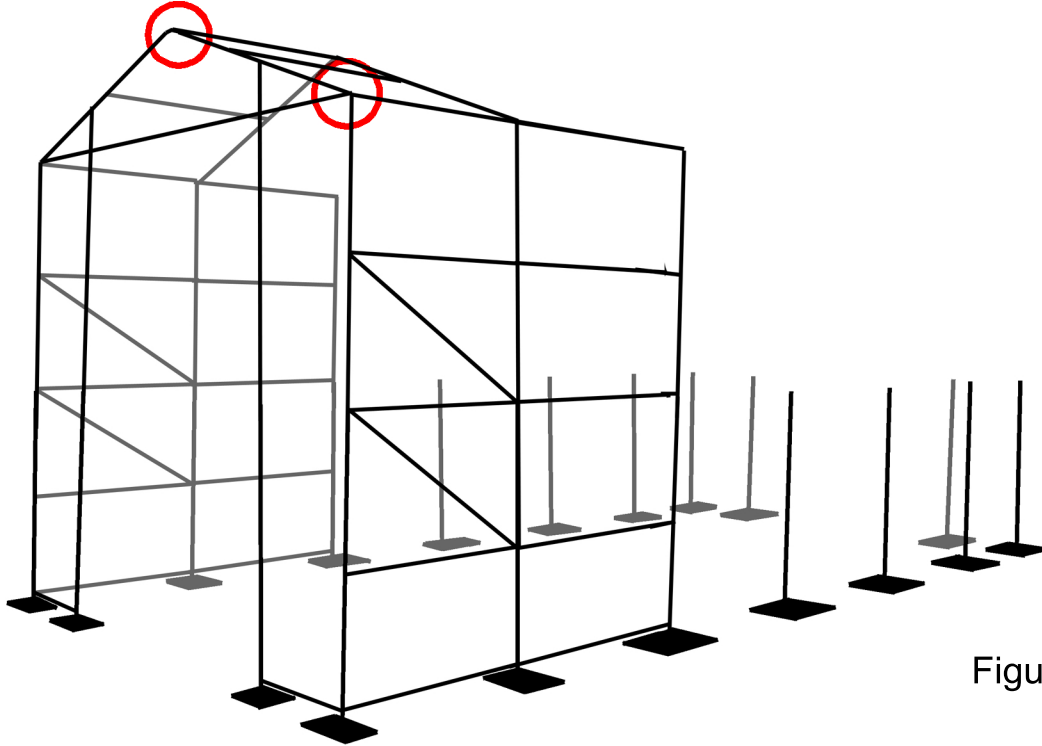


Figure 5

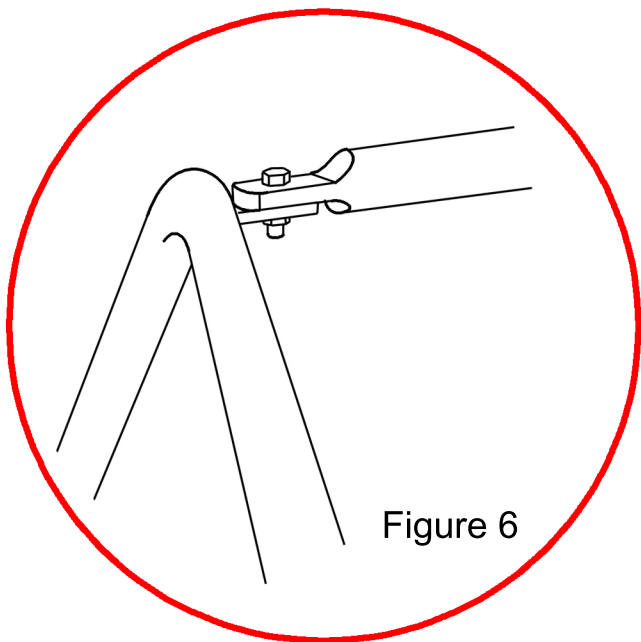


Figure 6

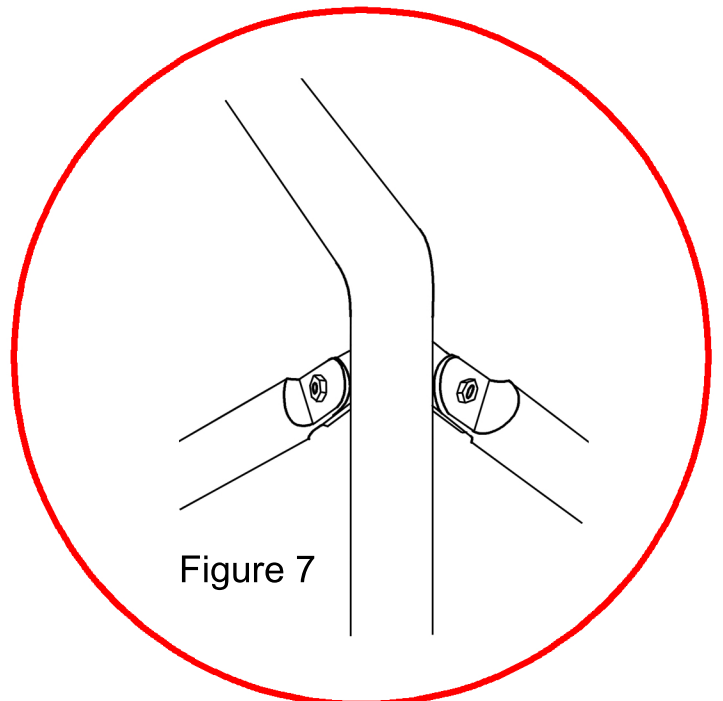


Figure 7

Step # 5

Repeat steps #3 and #4 until the entire frames has been erected. Note that you have to install windcrosses in the sidewall sections closest to the corners. (see Figure #4). It should look like figure #8.

Step #6:

Make sure that all bolts are inserted from the outside in before proceeding with the cover. Make sure all foot plates are secured to the ground.

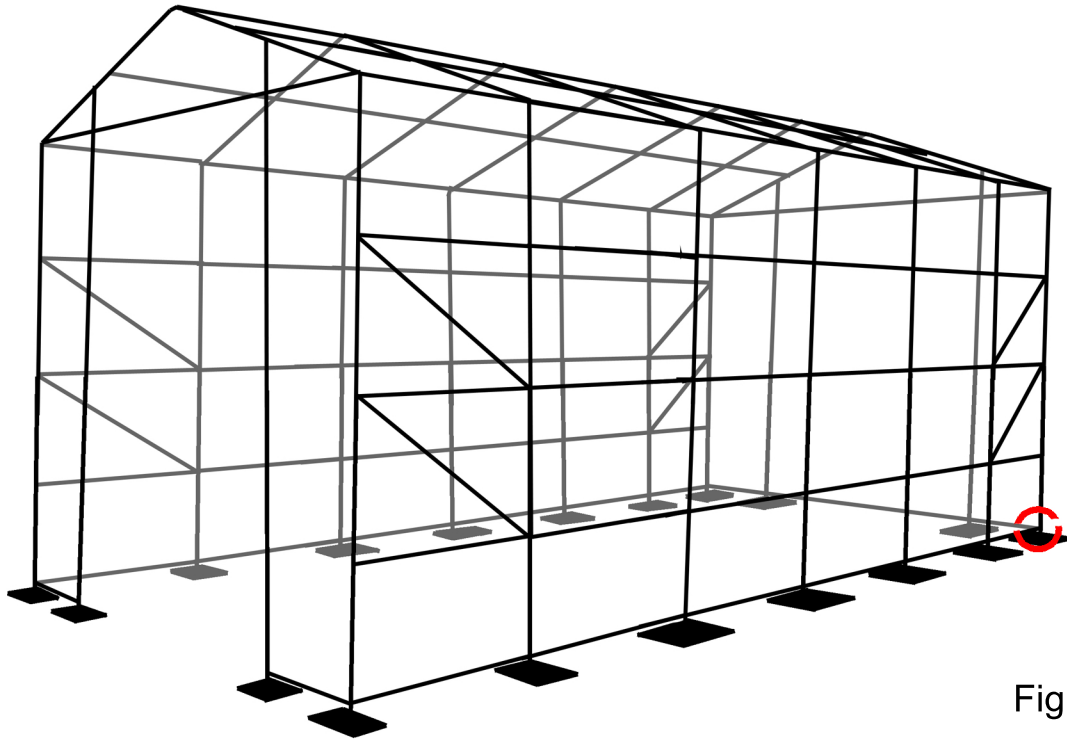


Figure 8

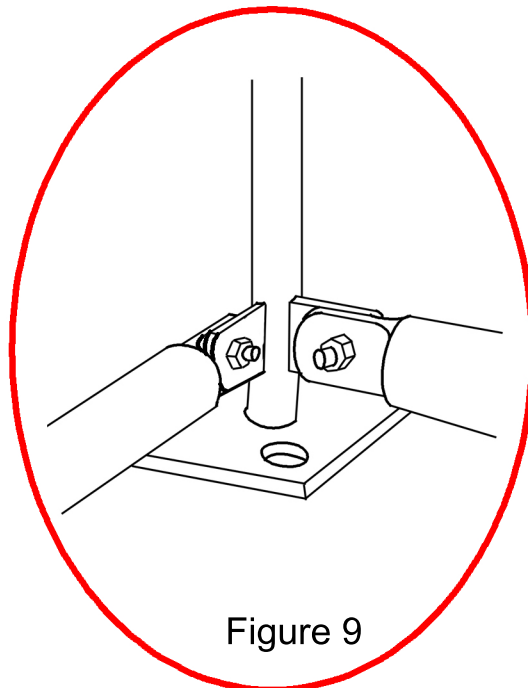


Figure 9

Mounting the Cover

Step #7

Tie in a crossbeam in one side of the cover. as shown in figure # 10.

Step #8

Pull the cover over the top of the structure using 3 ropes tied to the crossbeam.

See figure # 11

Step #9:

Make sure that the cover sits on evenly on both sides of the frame.

Step #10:

Tie the cover to the bottom tensioning bar. Make sure that it is tightened.

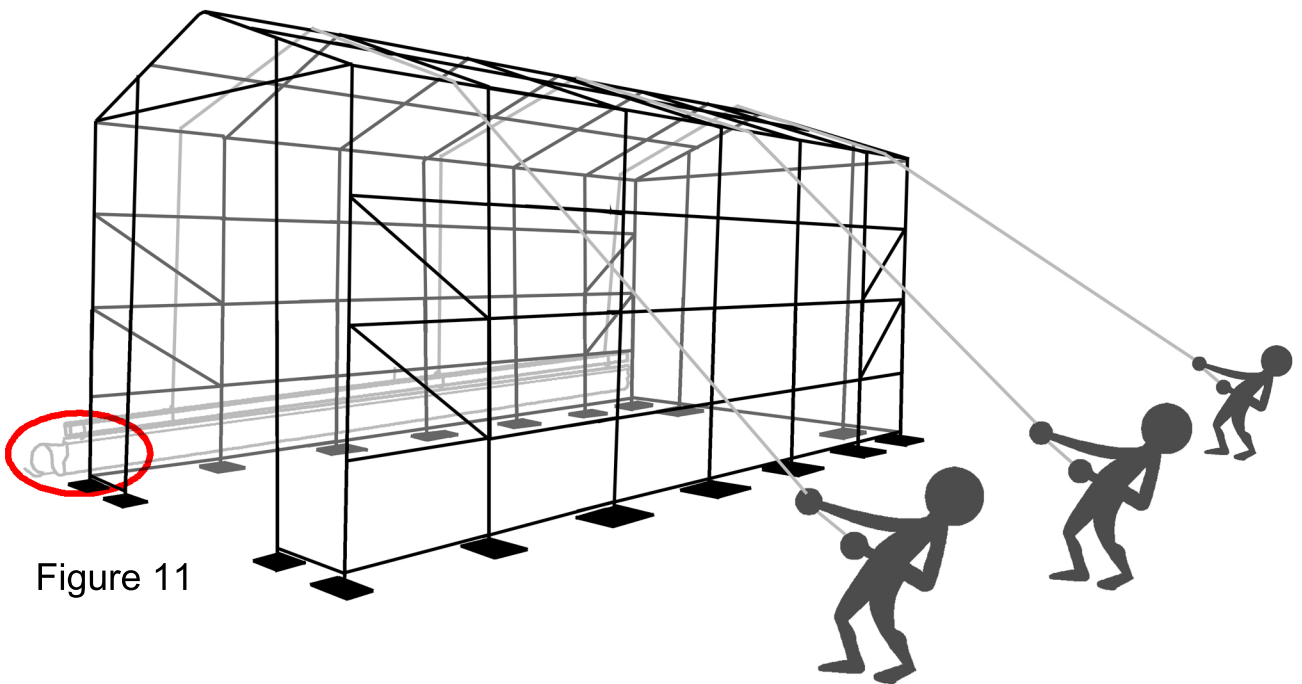


Figure 11

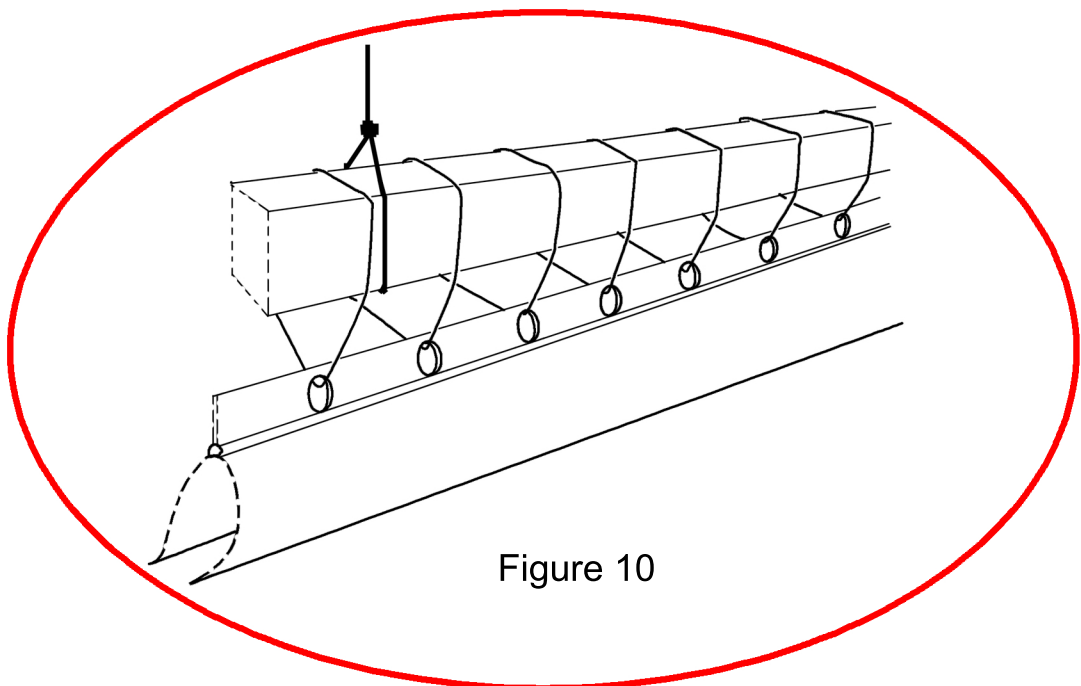


Figure 10

Step # 11:

Mount the front and the back cover by weaving the rope around the bars as shown in figure # 12 and # 13. Do the same with the roof cover. Make sure to use one rope for each covers.

Step # 12:

Make sure that the edge of the roof cover overlaps the front/back cover (over the end bars) as shown in figure #14. Slide a rope through the end sleeves and tighten the rope through the hoops of the corner footplates.

Step # 13:

Make sure all ropes are secured and tight.

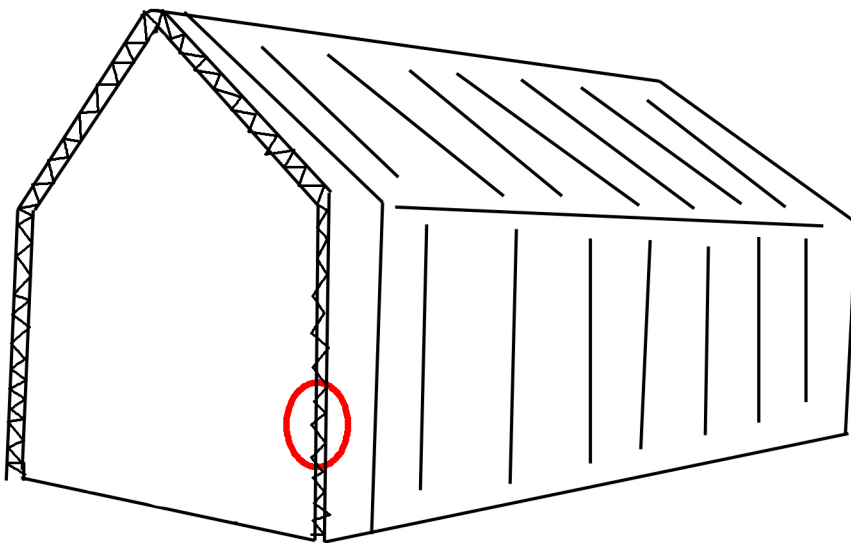


Figure 12

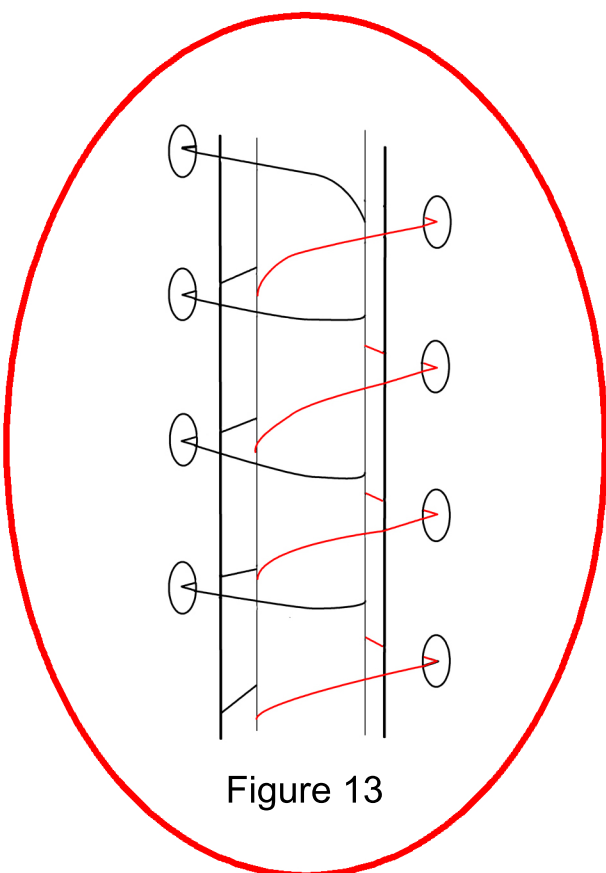


Figure 13

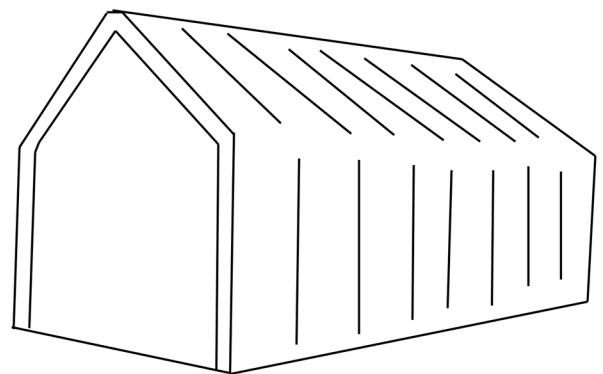


figure 14

Contact Information.

Dancover UK

Tel. 020 722 102 20

Fax. (+45) 70 26 76 30

E-mail: mail@dancover.co.uk

VAT NO. 894 5631 80

For warranty/claims please fill out our form at:

<http://www.dancovershop.com/info.asp?text=5>

And we will get back to you as soon as possible.