

DANCOVER[®]

.com

Manual
for
Polytunnel greenhouse
2x5x2m

DANCOVER[®]

.com

Safety Advice

Attention

In some countries approval is needed to set up a marquee/tent larger than 75 m². It is your responsibility to comply with local rules and regulations and to ensure that the marquee/tent is assembled correctly.

In case of bad weather conditions, it is your responsibility to ensure the marquee/tent is safely secured and that the marquee/tent does not cause damage to others.

Do not use open fire, welding equipment or other sources which can ignite, inside or close to the tent.

The marquee/tent must be safely secured. We recommend you secure your marquee/tent with straps and pegs as soon as it is assembled.

Make sure to check if the marquee/tent is covered by your home contents insurance.

Marquees/tents must be evacuated under extreme weather conditions.

In the event of snow always remove snow from the roof of the marquee/tent regularly to prevent snow from building on the roof as heavy snow can cause the marquee/tent to collapse.

In the event of rain there is a risk of rain puddles building up on top of the roof of the marquee/tent. Heavy rain puddles can cause the roof to collapse. It is your responsibility to ensure rain puddles do not build up. As a precaution, make sure the roof of the marquee/tent is stretched out properly and adequately over the side frames of the marquee/tent and remove rain water regularly.

Do not unpack or repack your marquee/tent in freezing temperatures. In case of temperatures below zero always unpack and repack your marquee/tent indoors to avoid the risk of cracking parts.

The marquee/tent must be totally dry before you repack and store it to avoid mildew.

This structure is not tested for snow and wind loads. We always recommend that you remove snow from the roof.

Warranty Information

Please visit dancovershop.com for information on warranty.

Please always check our website for the latest safety advice and manual.

Part No	Name of the part	Length: [cm]	Number [pcs.]
1A	One-side side bow R		2
1B	One-side side bow L		2
1C	Front one-side bow		2
1D	Side reversible bow		6
1E	Top reversible bow		3
2	Front horizontal connector	194	2
3	Horizontal connector	121	20
4	Bows connector	15	10
5	Vertical connector (door frame)	159	2
6	Post	80	10
7	Corner reinforcement	75	4
8	Top horizontal reinforcement	105	2
9	Door vertical cross bar	152	2
10	Door horizontal cross bar	56.5	2
12	Clamp fi25		12
13	Reversible clamp		16
14	Middle connector		6
15	Corner connector		4
16	Horizontal rolling connector (rolling device)	125	8
17	Horizontal connector (rolling device)	122	8
21	Horizontal connector \varnothing 22 middle L= 13	13	6
22	Horizontal connector \varnothing 22 end L= 8	8	4
23	Crank		2
24	Bolt M6x60 + nut		10
25	Hook(holdfast) 6x40 + nut x 2 pcs		20
26	Bolt M6x40 + nut		145
27	Nut M8		8

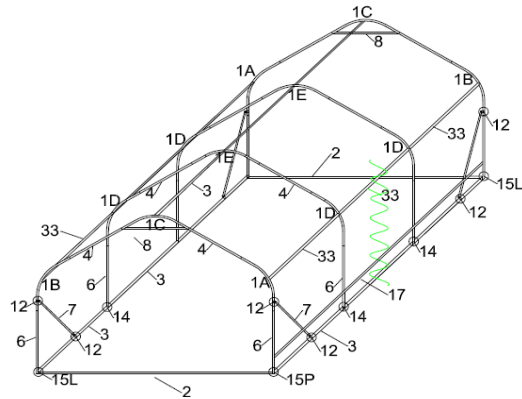
Assembly

Tunnel construction consists of tubular parts, hot-dip galvanised in and out, postfabricated, which prevents them from corrosion. Assemble tubes according to the drawing, cut the cover according to the drawing (only the front and the back wall and doors; the rest is precut), put it on the tunnels construction stretching it and pin it to the tubular part with the clips. Construction can be easily transported to another place or reassembled.

Assembly manual – TUNNEL 2,0 x 2.0 x ...m

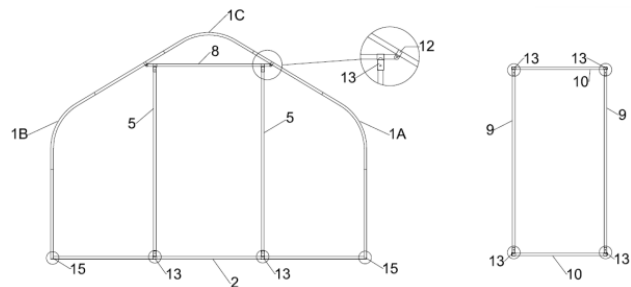
1. All construction parts of the construction correspond to the specification.

Distance between bows is 1,25m. Depending on the number of bows the length of the tunnels increases 1,25m with each bow. Please find below the drawing with tunnel dimensions.



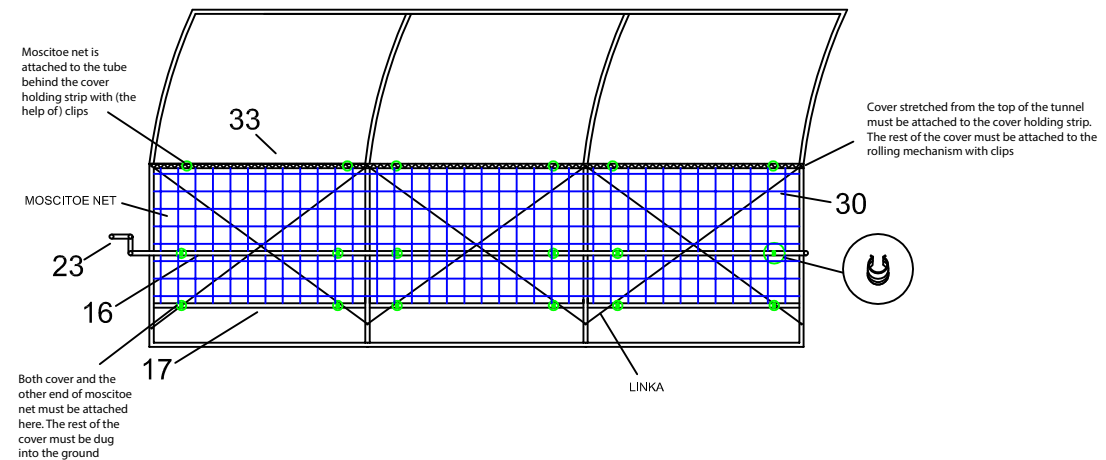
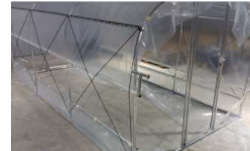
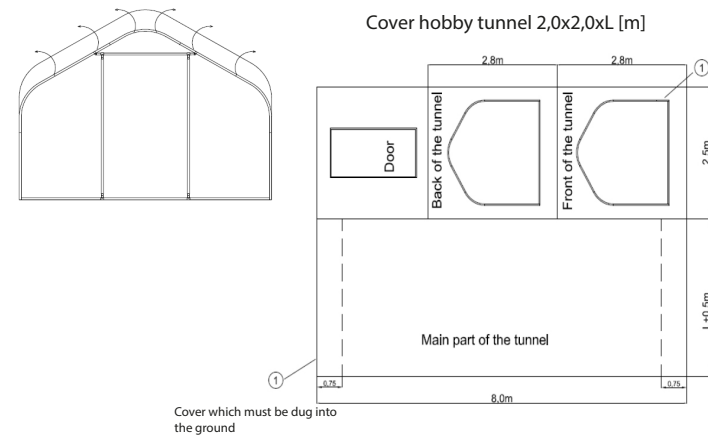
2 Assembly of the front and back wall with door

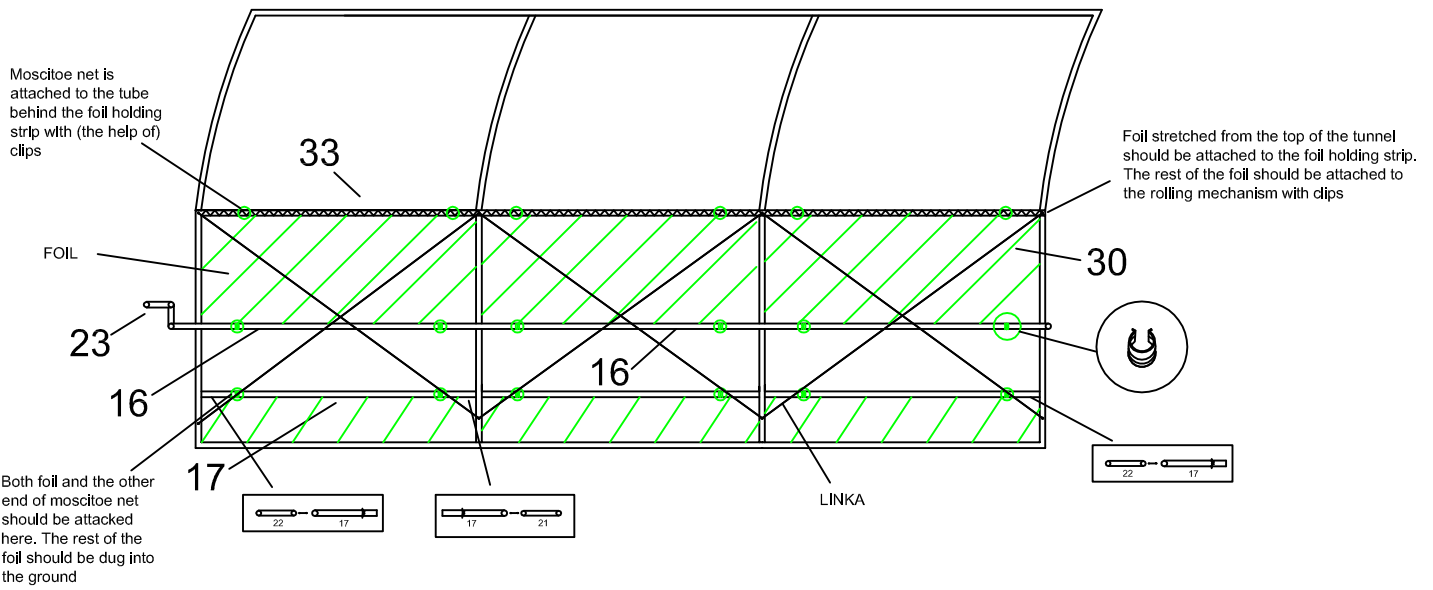
This is how the front/back wall should be assembled. The door frame and the door is assembled with the help of reversible clamps (nr 13 in specification).



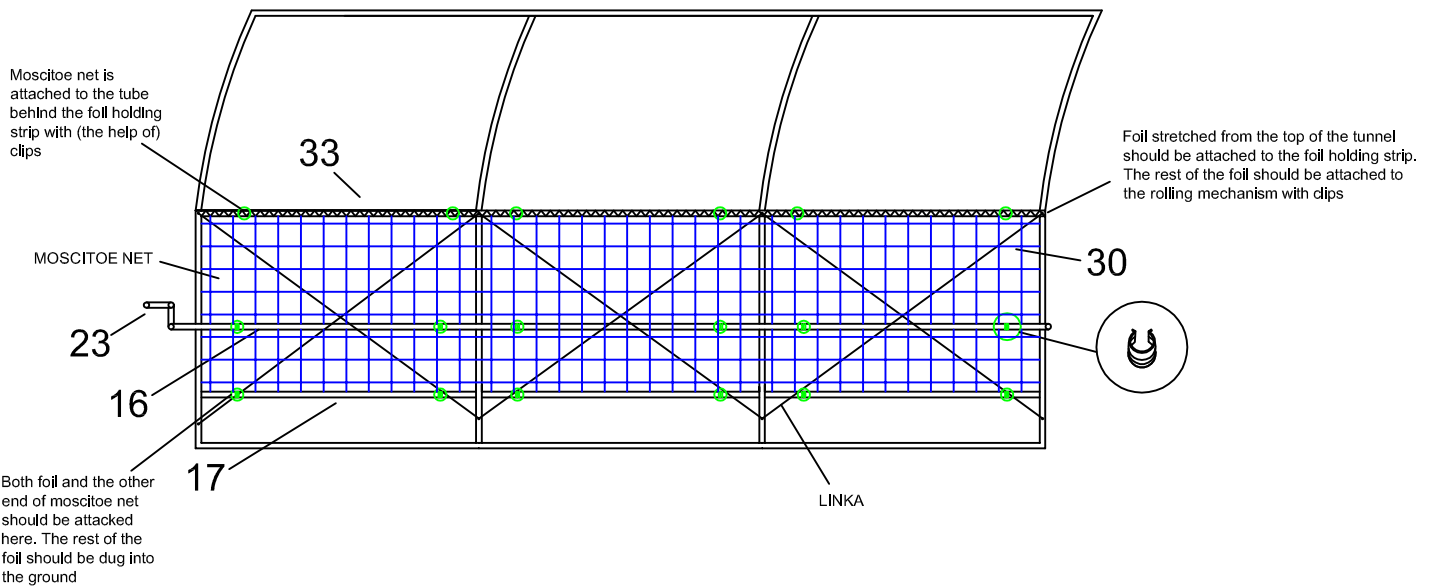
3 Cover/mosquito net assembly.

Cover is assembled with the help of plastic clips. When assembling the cover, please cut out the shape of the front and back wall and rectangular shape for the doors and attach them to the corresponding construction parts. The rest of the cover is already precut. The main part should be placed along the whole tunnel from the top of the front wall to the top of the end wall. The pieces of cover for the curtain should be attached to the horizontal connector.





Ventilation system

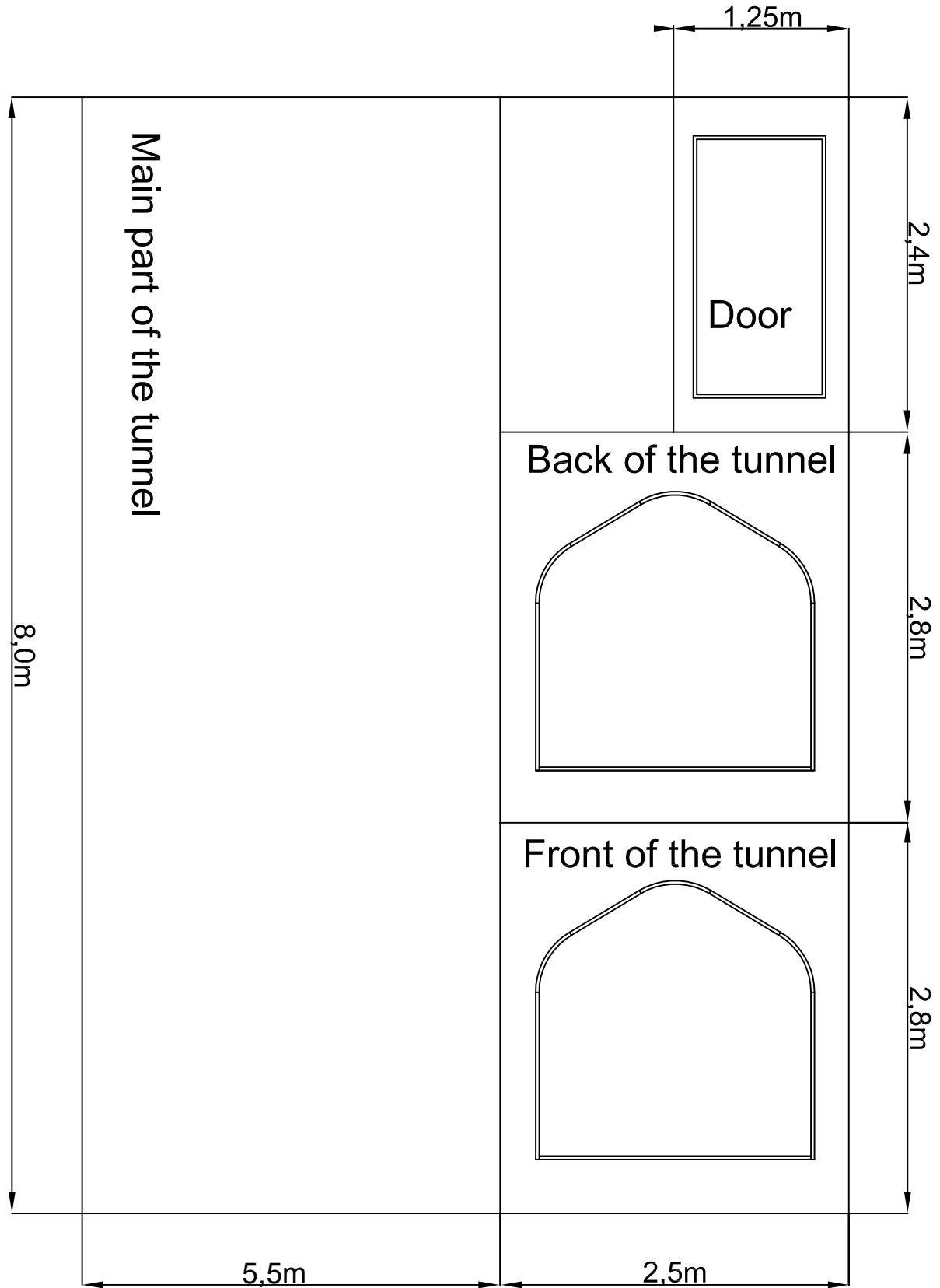


Ventilation system

Cover

The “Main part of the tunnel” piece is extra long on both sides. The extra cover must be dug into the ground to secure the polytunnel greenhouse.

Connect the cover to the frame with the easy clip-on connector system.



Foil hobby tunnel 2,0x2,0x5,0 m

Contact information

Head office:

Dancover A/S
Nordre Strandvej 119 G
3150 Hellebæk
Denmark

For more information
please visit:
www.dancovershop.com

National contact

Denmark: 70 26 76 20
denmark@dancover.com

UK: 020 8099 7570
uk@dancover.com

Germany: 041 0266 7040
germany@dancover.com

France: 0975 181 800
france@dancover.com

Sweden: 040 233 262
sverige@dancover.com

Finland: 0 931 581 720
suomi@dancover.com

Poland: 22 300 8602
polska@dancover.com

Luxembourg: +49 041 0266 7040
luxembourg@dancover.com

Portugal: 308 800 899
portugal@dancover.com

Spain: 911 436 828
espana@dancover.com

Italy: 02 479 21 198
italia@dancover.com

Switzerland: 0840 000125
schweiz@dancover.com

Austria: 0662 626935
austria@dancover.com

Norway: 231 00 690
norge@dancover.com

Nederland: 0 858 880 524
nederland@dancover.com

Ireland: 0 151 33 003
ireland@dancover.com

Belgium: 0 28 08 08 09
belgique@dancover.com